

**Modular Cooking Range Line
 thermaline 80 - 500mm Passth. Electric
 Warming Cabinet, 2 doors, GN conform,
 2 Sides(H2)-H=550**

ITEM # _____
 MODEL # _____
 NAME # _____
 SIS # _____
 AIA # _____



588317 (MA4JDCEOAO)

Passthrough electric
 warming cabinet, with 2
 doors, two-side operated,
 GN - H2

Short Form Specification

Item No. _____

500 mm wide passthrough warming cabinet with 2 doors, constructed according to DIN 18860_2 with 70 mm recessed plinth. Internal frame for heavy duty sturdiness in 2 mm and 3 mm in 1.4301 (AISI 304). 2 mm top in 1.4301 (AISI 304). Flat surface construction, easily cleanable. THERMODUL connection system enables seamless worktop when units are connected and avoids soil penetrating. Temperature in the cabinet can be set through thermostat, up to a maximum of 110 °C. Cabinet storage space accepts GN 1/1 containers.
 IPX5 water resistant certification.
 Configuration: Two-side operated freestanding base, hygienic class H2.

Main Features

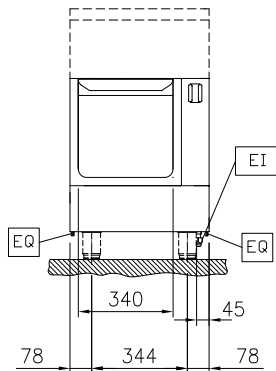
- All major components may be easily accessed from the front.
- THERMODUL connection system creates a seamless work top when units are connected to each other thus avoiding soil penetrating vital components and facilitating the removal of units in case of replacement or service.
- Unit constructed according to DIN 18860_2 with 70 mm recessed plinth.
- Temperature in the cupboard can be set through a thermostat to suit different requirements. The maximum temperature is 110°C.
- Unit can be installed below modular top appliances, designed to keep plates warm.

Construction

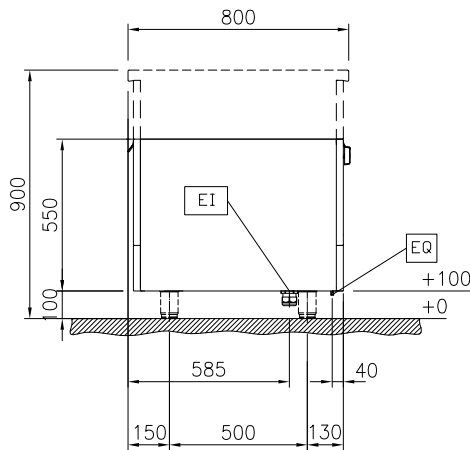
- IPX5 water resistance certification.
- 2 mm top in 1.4301 (AISI 304).
- Flat surface construction with minimal hidden areas to easily clean all surfaces
- Storage space in the base of the appliance accepts GN1/1 containers.
- Internal frame for heavy duty sturdiness in stainless steel.

APPROVAL: _____

Front

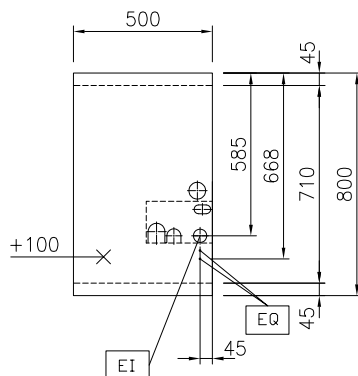


Side



EI = Electrical inlet (power)

Top



Key Information:

External dimensions, Width:	
588317 (MA4JDCEOAO)	500 mm
External dimensions, Depth:	800 mm
External dimensions, Height:	550 mm
Cupboard Cavity Dimensions (width):	340 mm
Cupboard Cavity Dimensions (height):	330 mm
Cupboard Cavity Dimensions (depth):	710 mm
Cabinet temperature range:	30-110 °C
Net weight:	27 kg

Sustainability

Current consumption:	2.5 Amps
----------------------	----------



Electrolux
PROFESSIONAL

Modular Cooking Range Line
thermaline 80 - 500mm Passth. Electric
Warming Cabinet, 2 doors, GN conform, 2
Sides(H2)-H=550

Optional Accessories

- Stainless steel side panel, 800x800mm, freestanding PNC 912508 ☐
- Stainless steel front kicking strip, 500mm width PNC 912595 ☐
- Stainless steel side kicking strips left and right, freestanding, 800mm width PNC 912619 ☐
- Stainless steel plinth, freestanding, 500mm width PNC 912822 ☐
- - NOT TRANSLATED - PNC 913233 ☐
- - NOT TRANSLATED - PNC 913244 ☐
- - NOT TRANSLATED - PNC 913257 ☐
- - NOT TRANSLATED - PNC 913279 ☐
- STAINLESS STEEL DIVIDING PANEL 800X800MM LEFT/RIGHT PNC 913669 ☐
- ELECTRIC MAINSWITCH 25A 4mm² NM FOR MODULAR H800 ELECTRIC UNITS (FACTORY FITTED) PNC 913676 ☐
- - NOT TRANSLATED - PNC 913685 ☐



Modular Cooking Range Line
thermaline 80 - 500mm Passth. Electric Warming Cabinet, 2 doors, GN
conform, 2 Sides(H2)-H=550
The company reserves the right to make modifications to the products
without prior notice. All information correct at time of printing.

2026.01.02